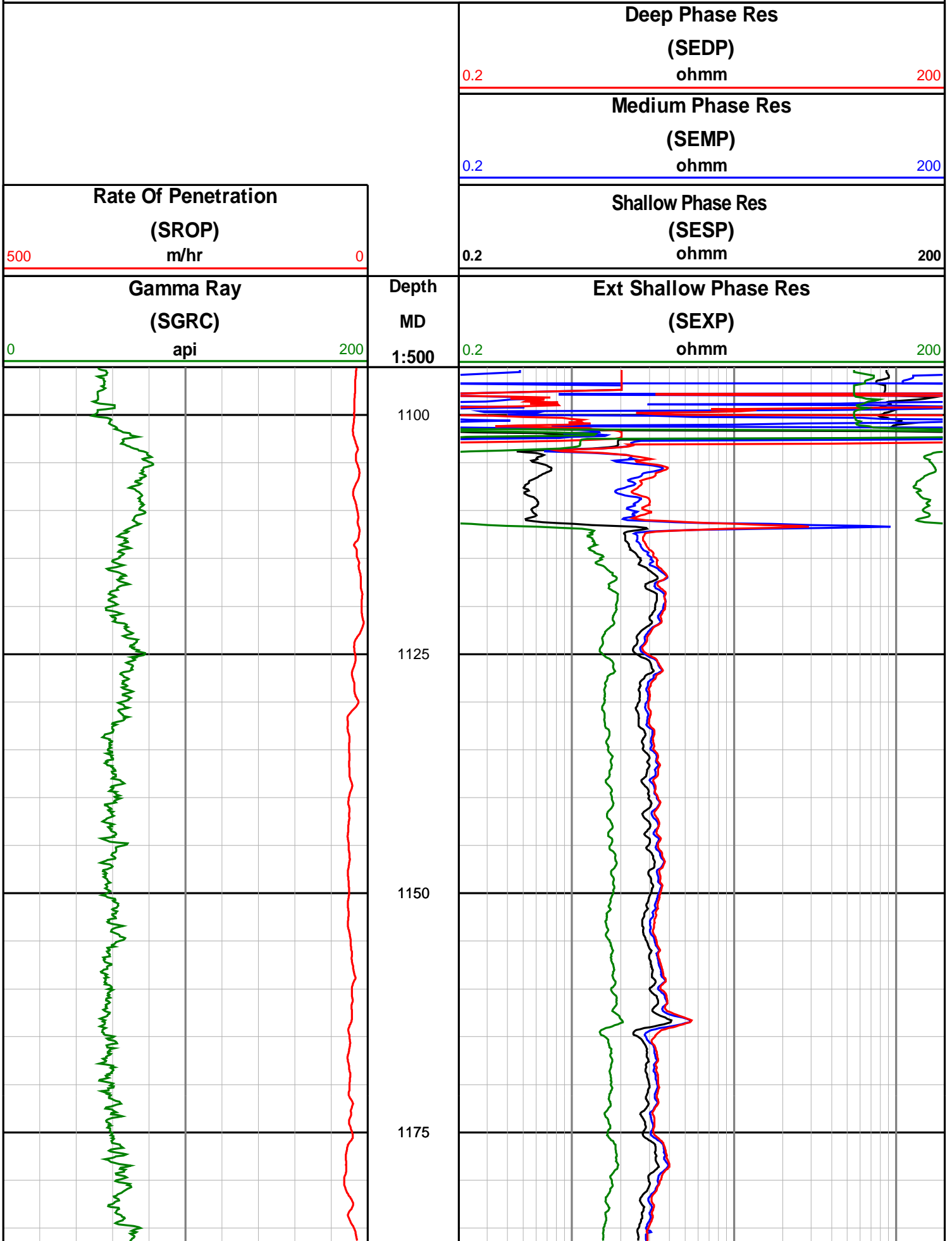
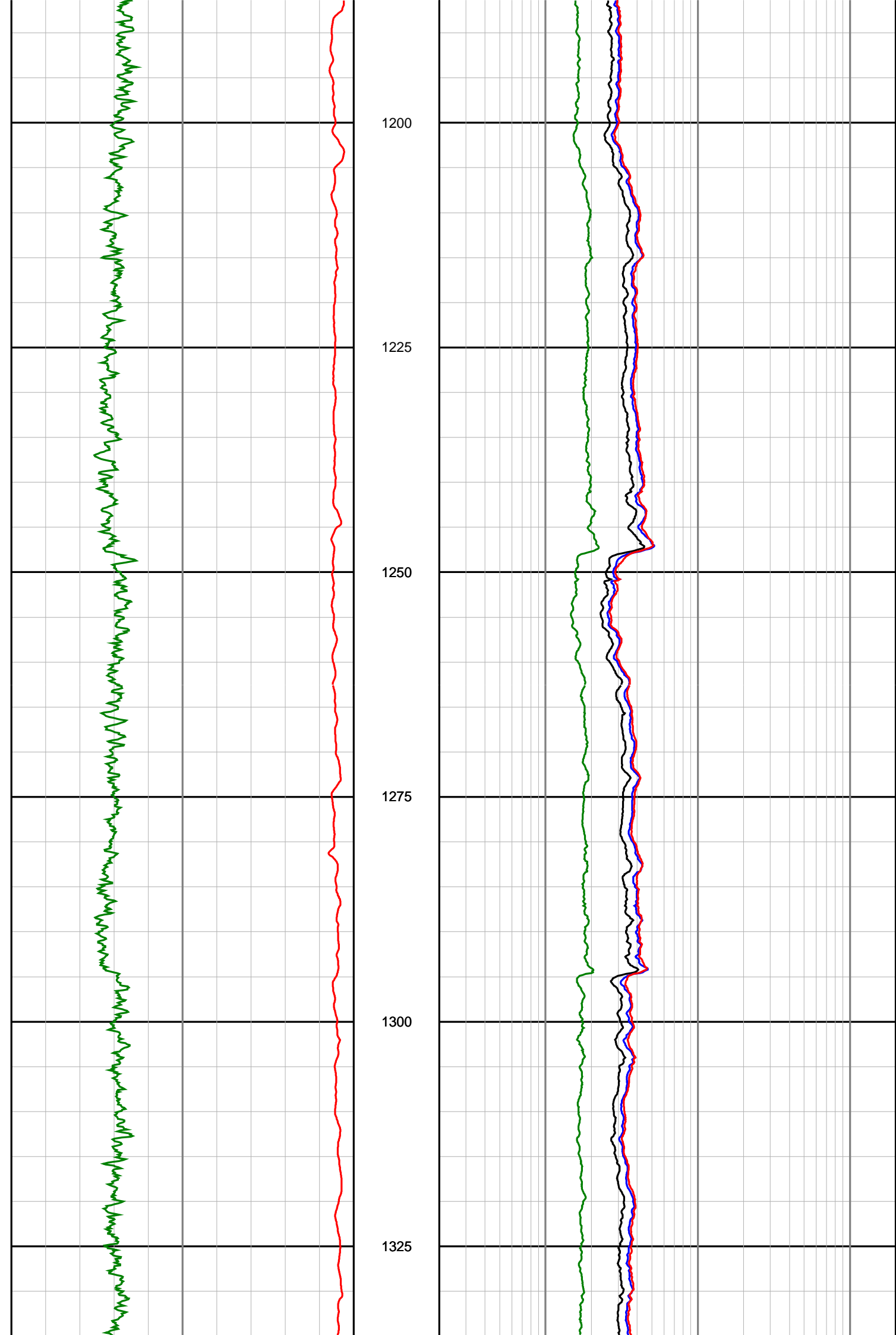


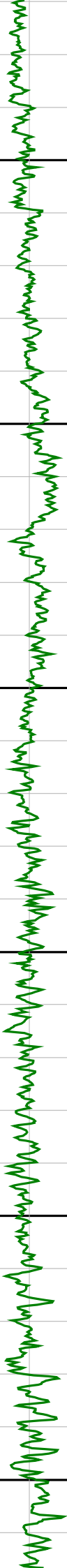
Anzon Australia Ltd

Basker-3

Recorded/Realtime LWD Log (Permanent Datum - LAT)







1350

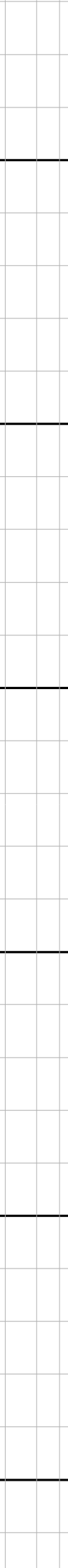
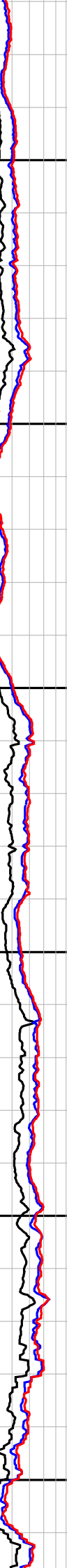
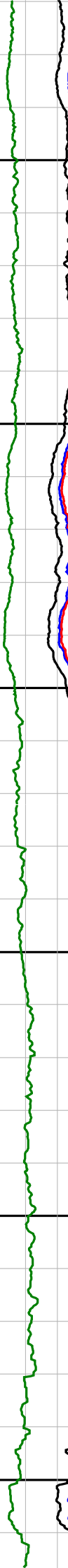
1375

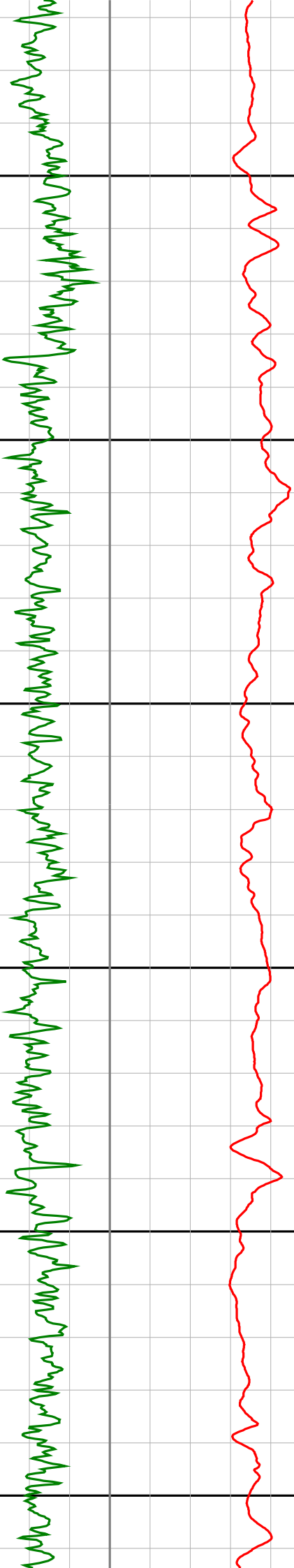
1400

1425

1450

1475





1500

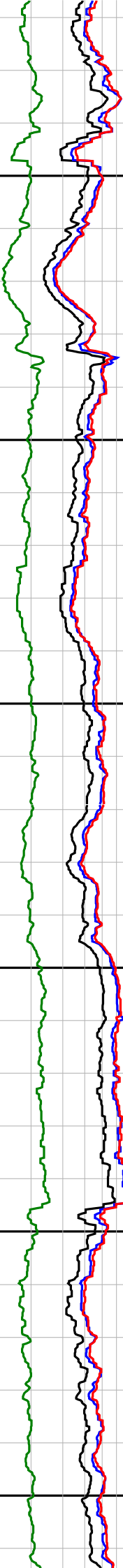
1525

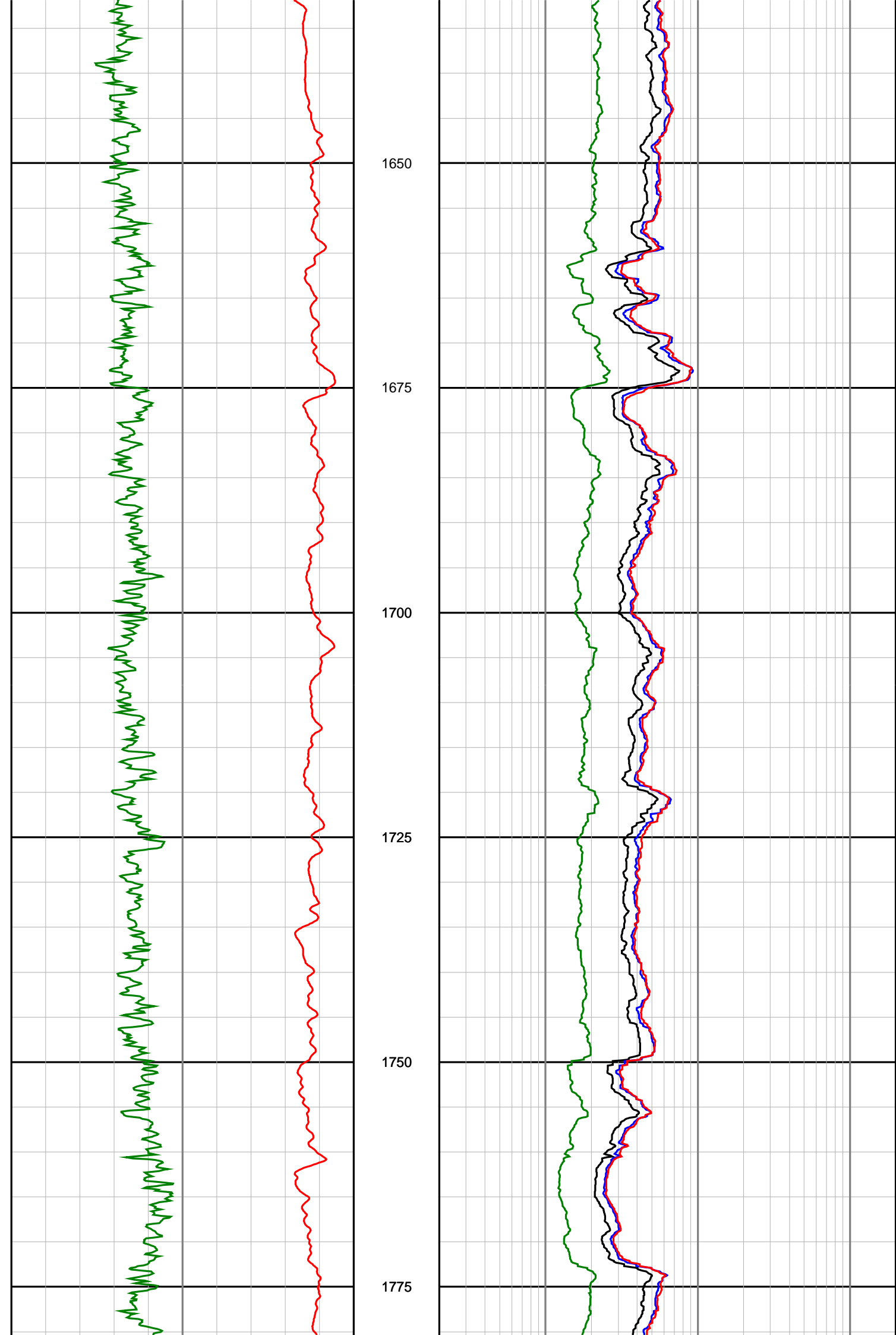
1550

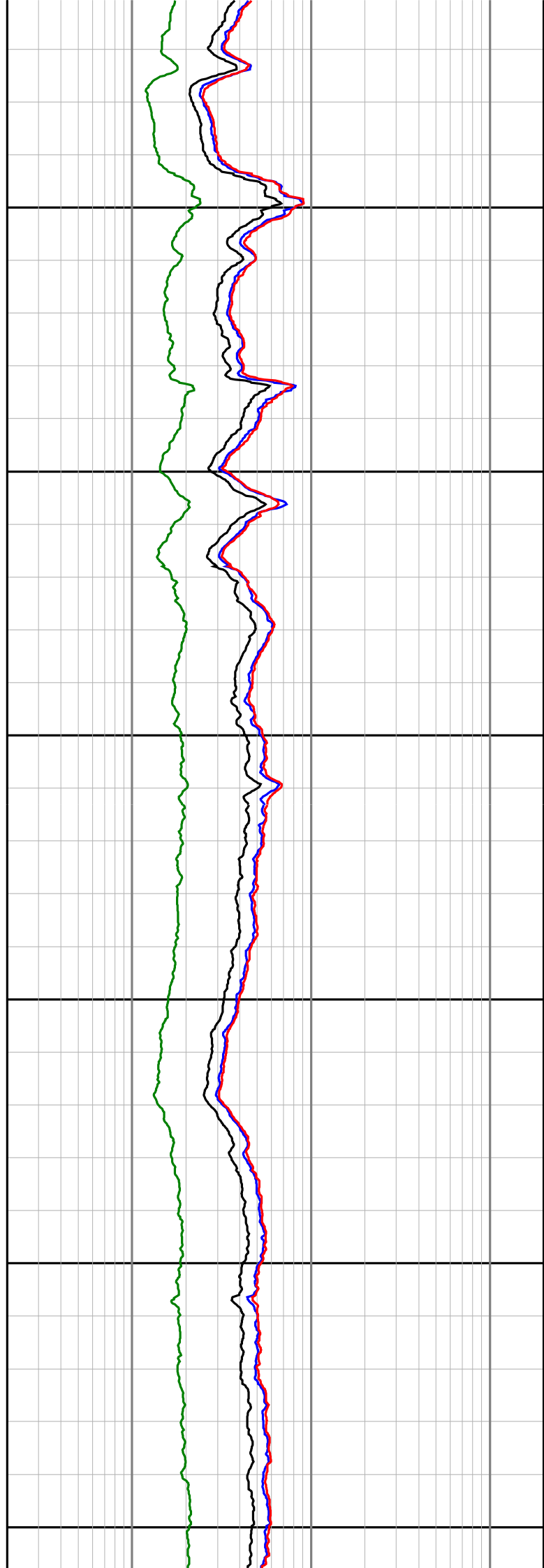
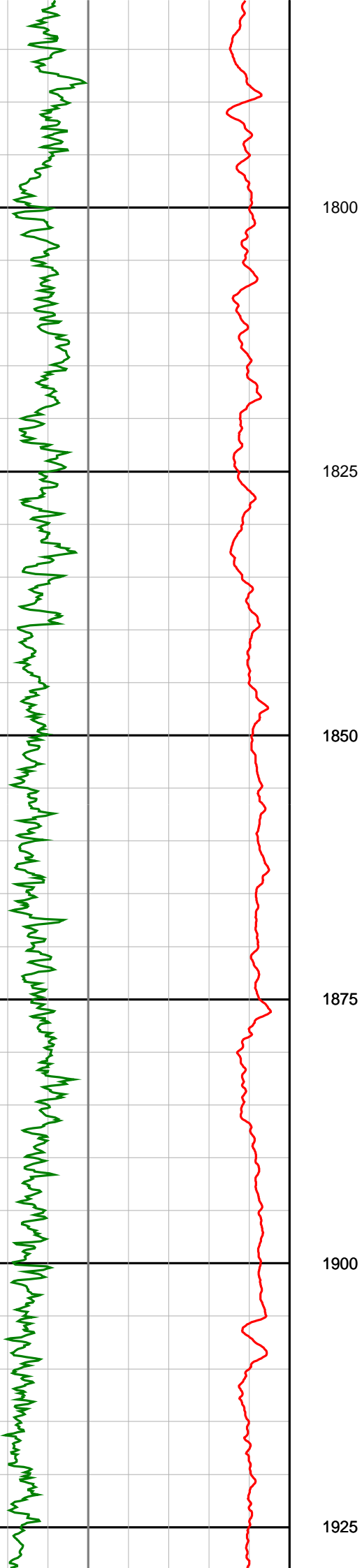
1575

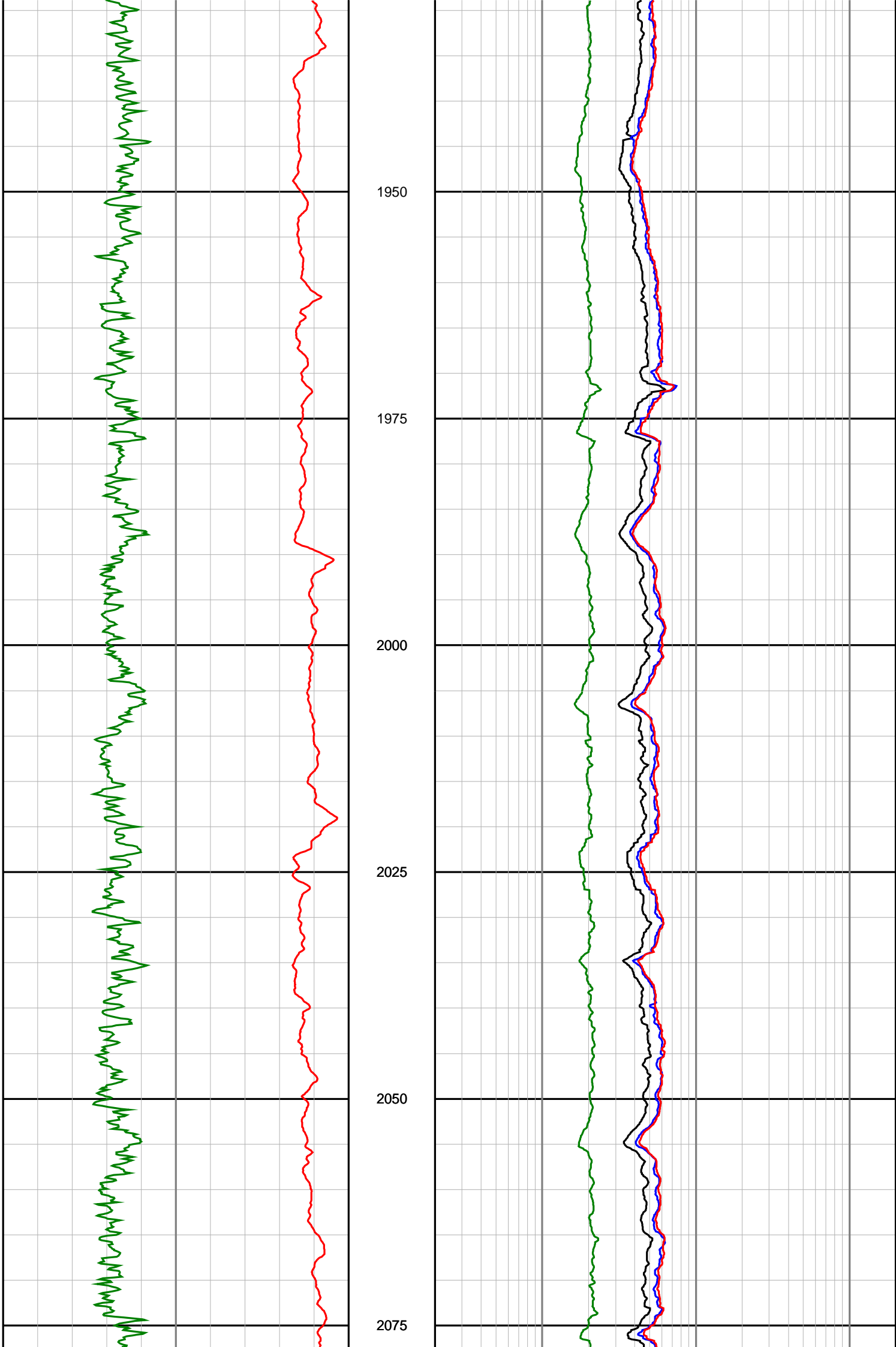
1600

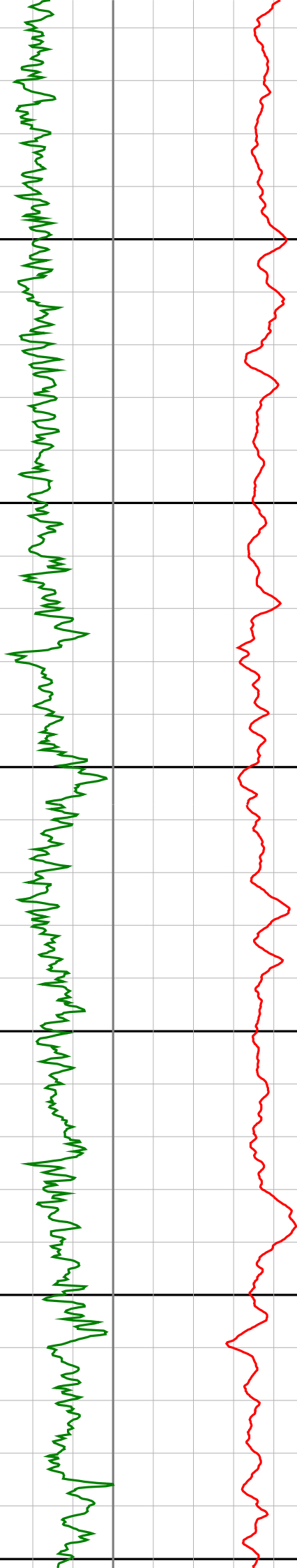
1625











2100

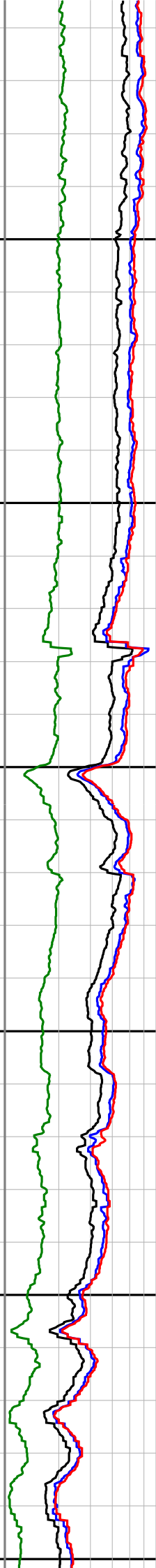
2125

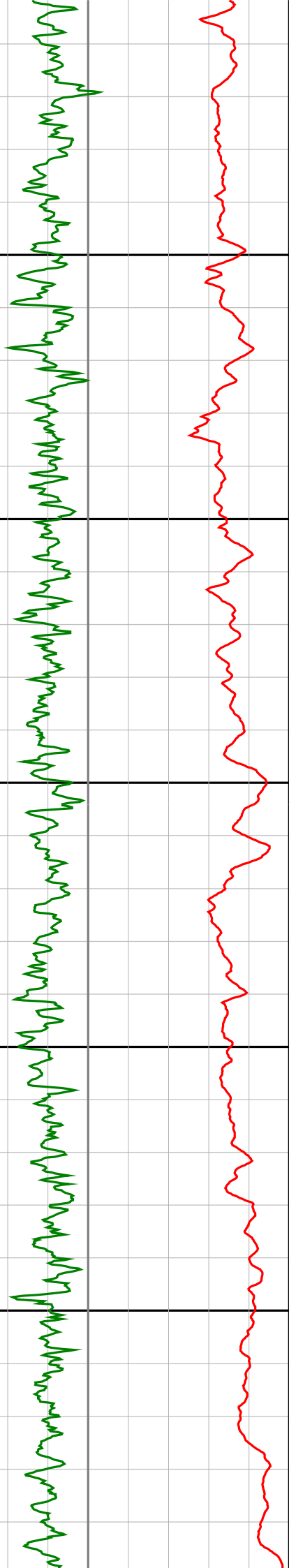
2150

2175

2200

2225





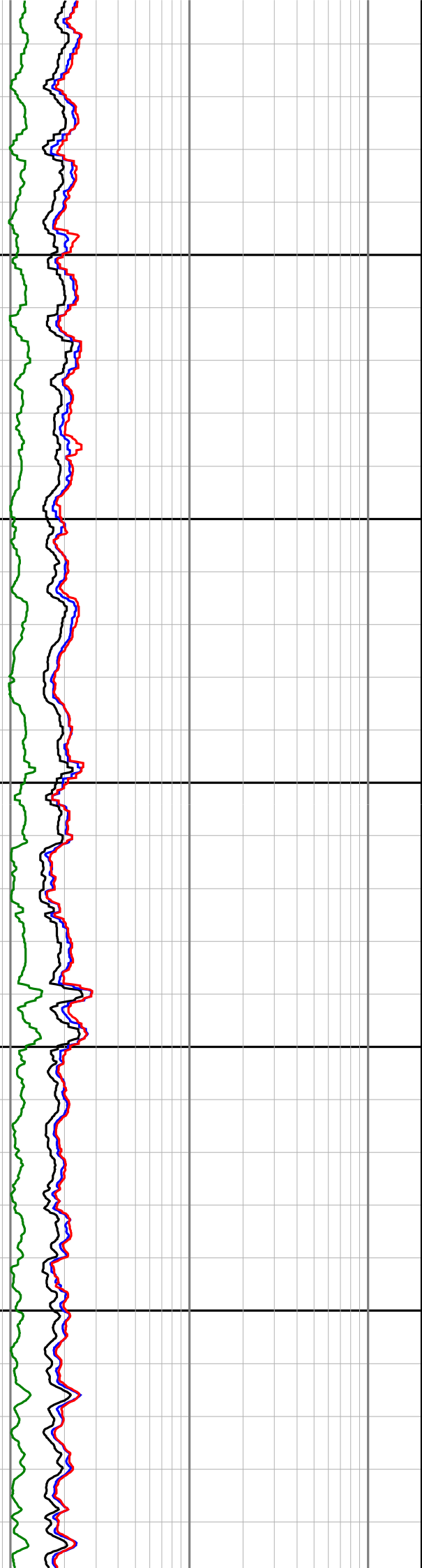
2250

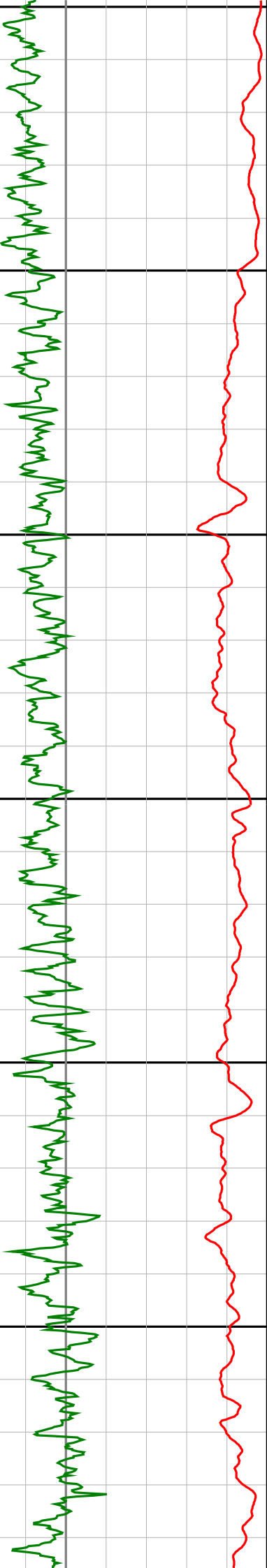
2275

2300

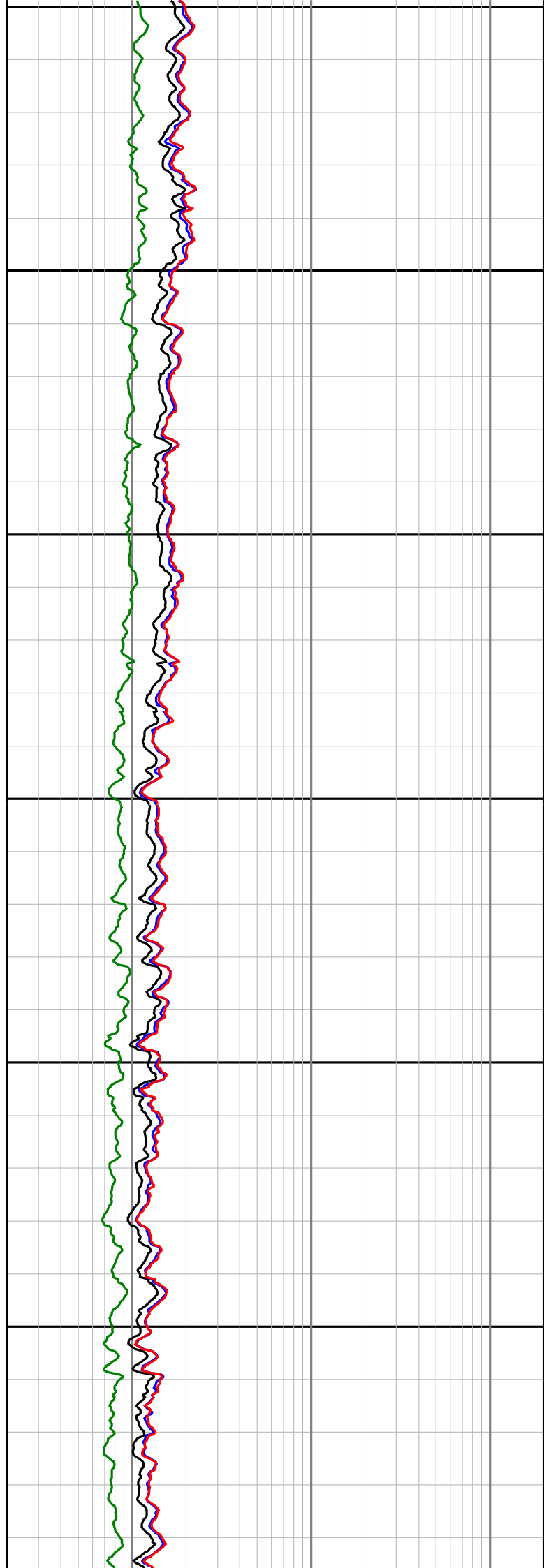
2325

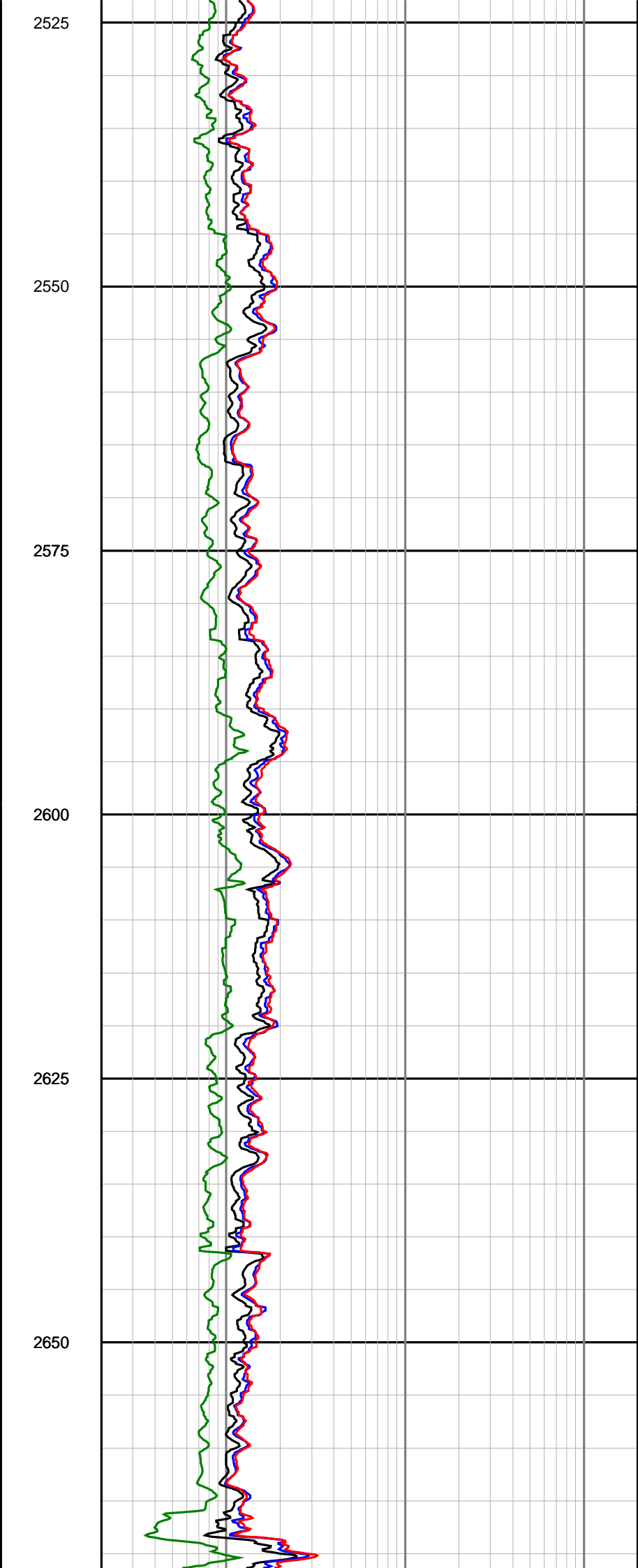
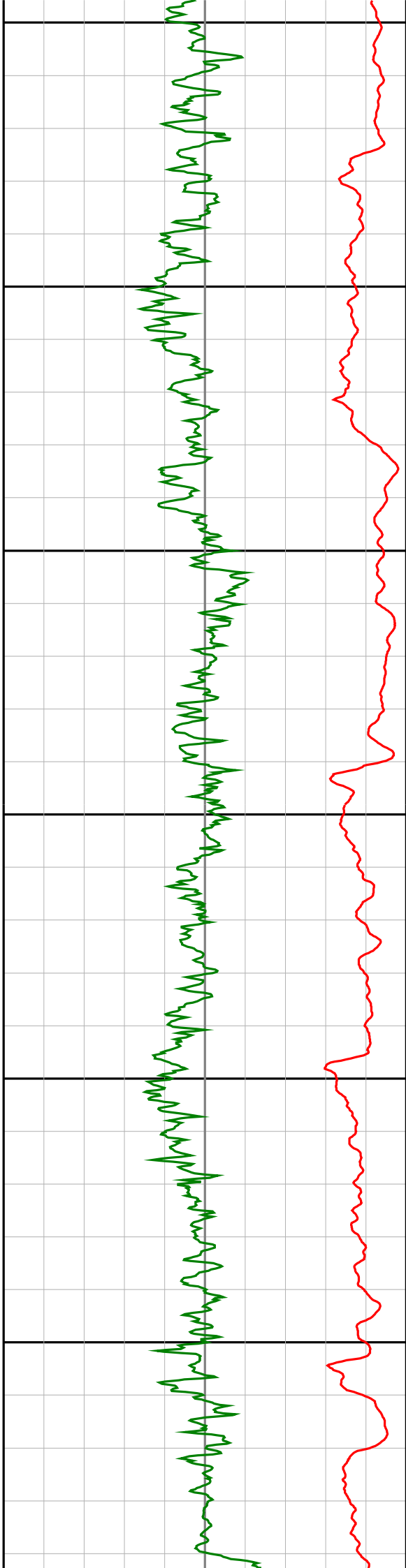
2350

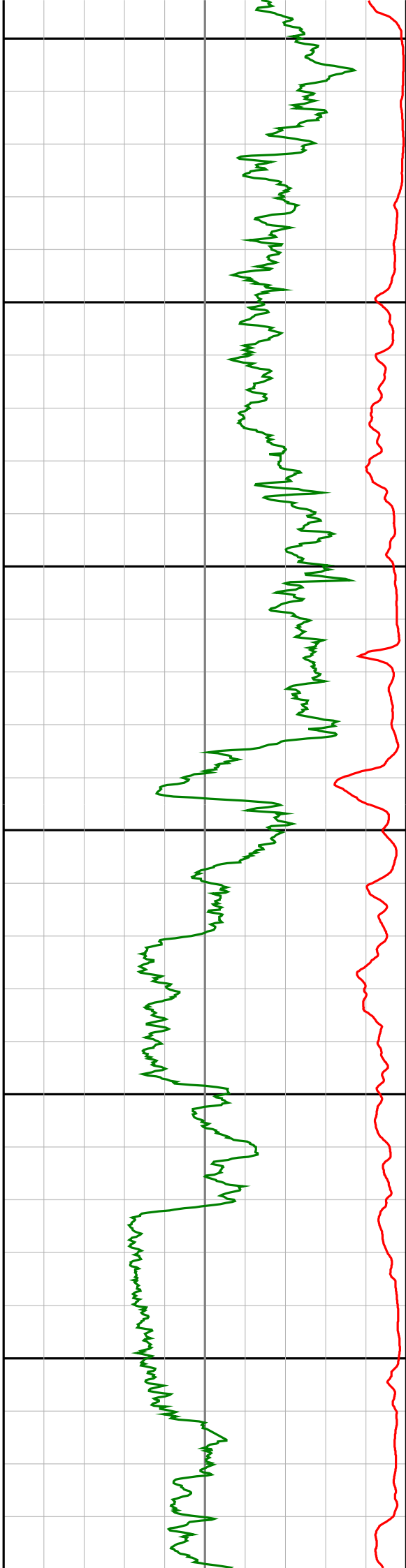




2375
2400
2425
2450
2475
2500







2675

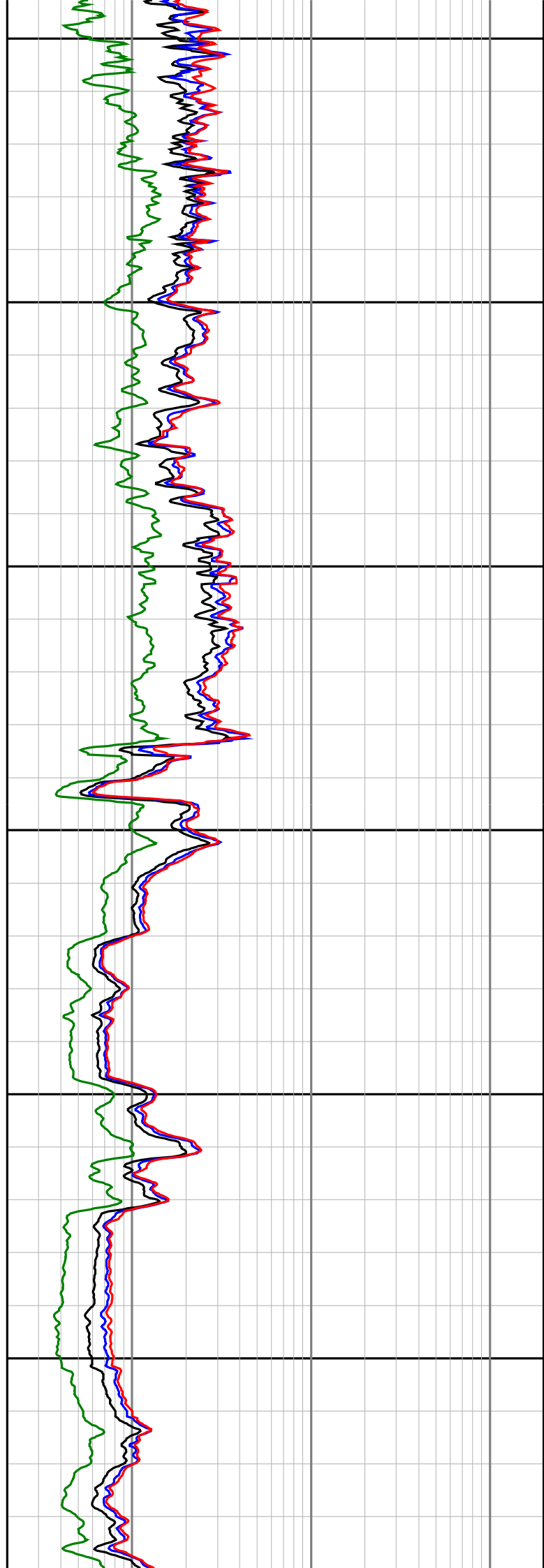
2700

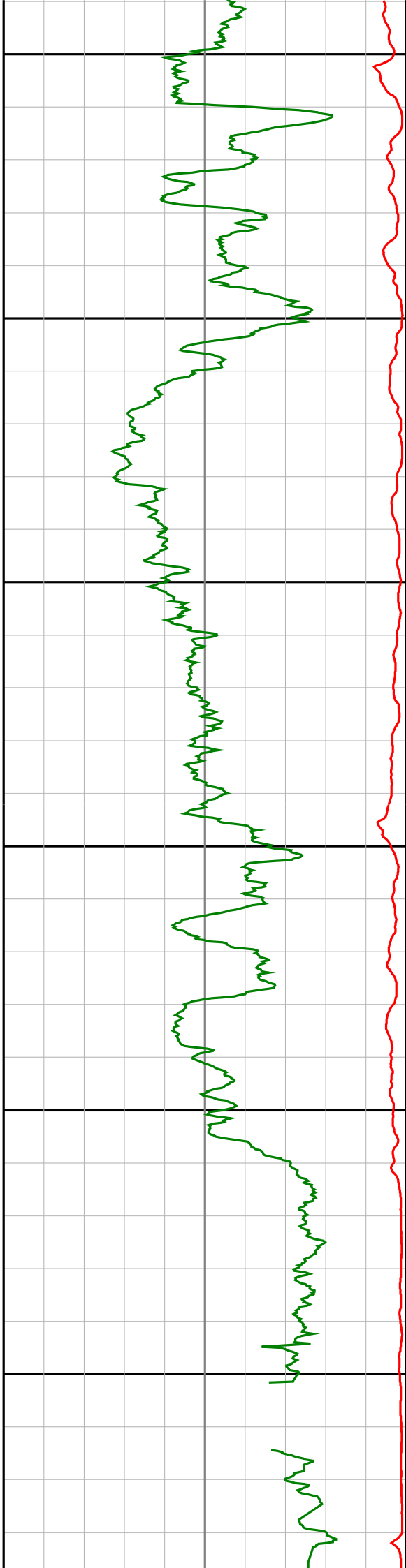
2725

2750

2775

2800





2825

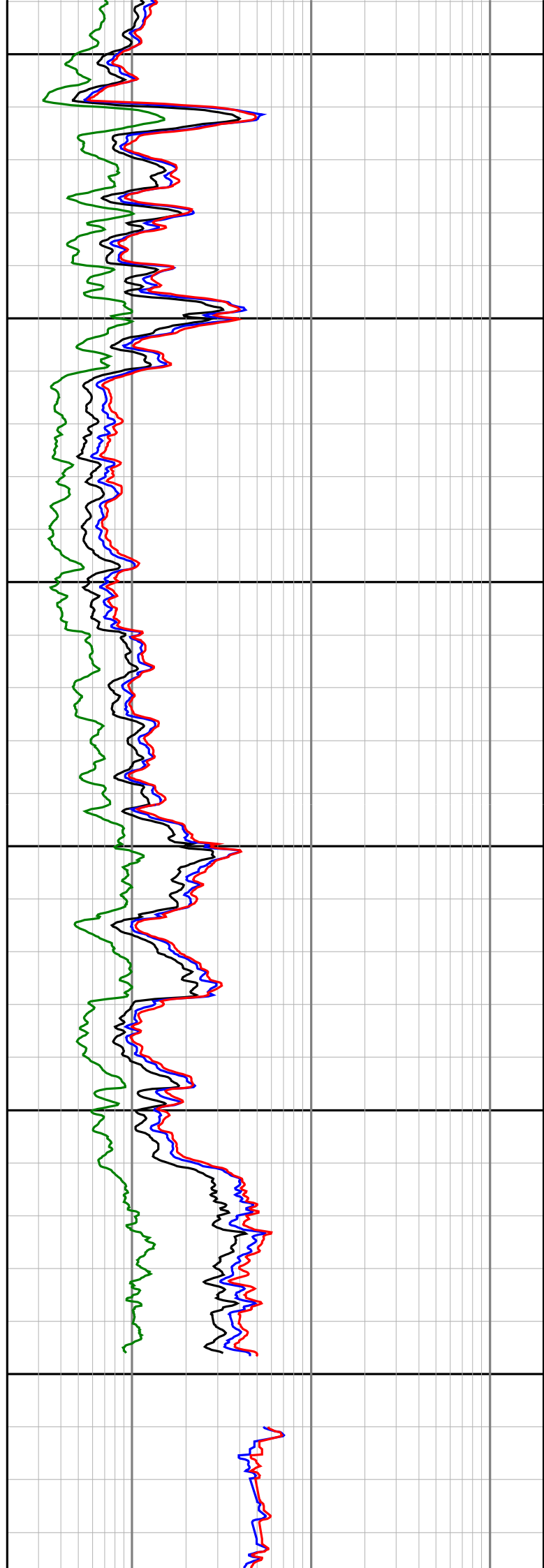
2850

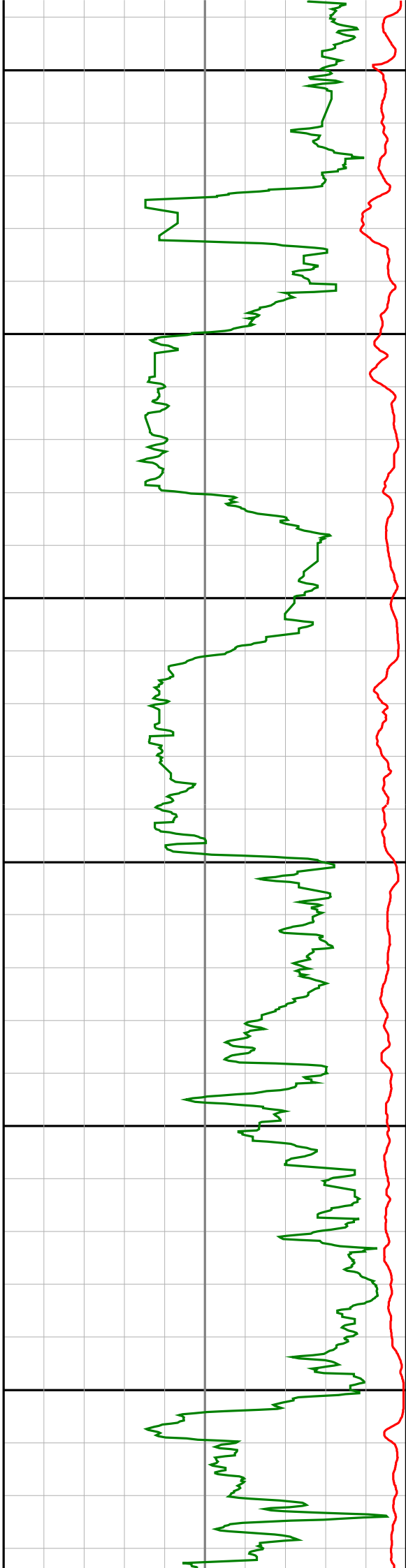
2875

2900

2925

2950





2975

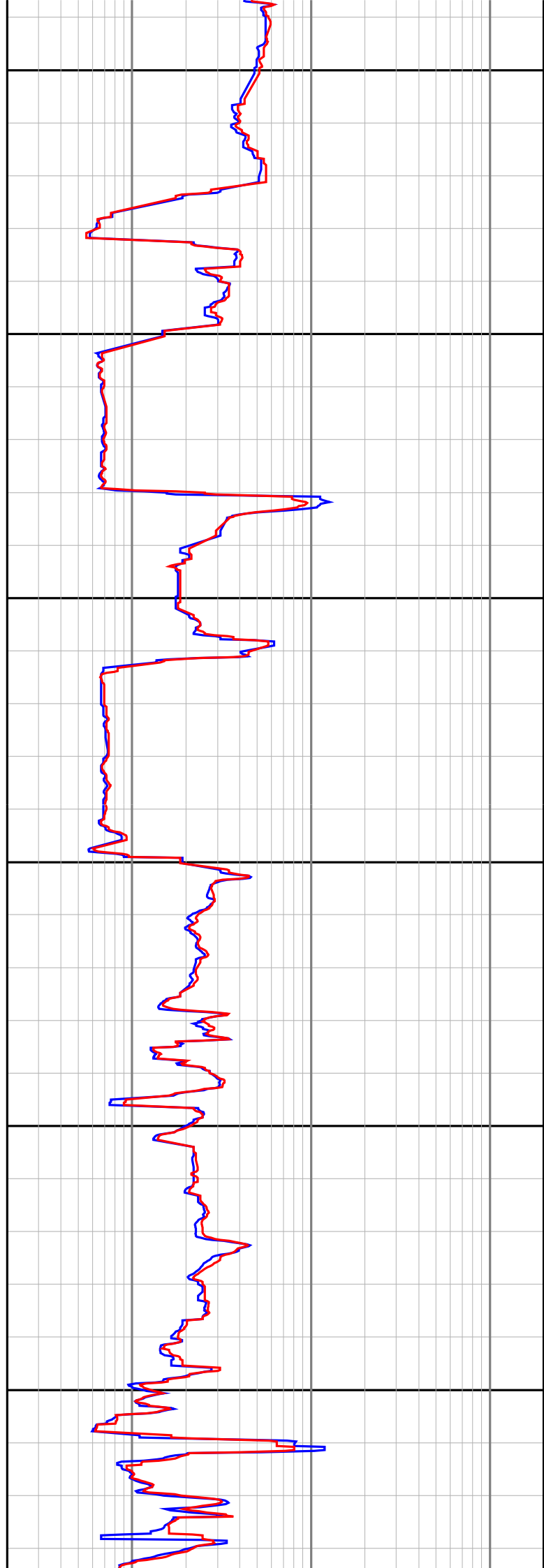
3000

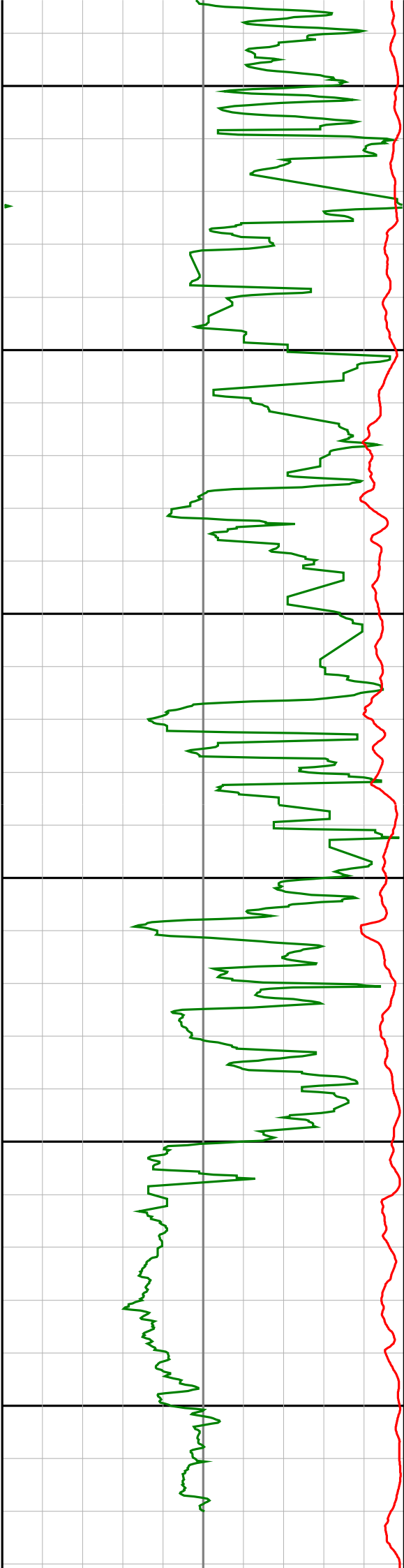
3025

3050

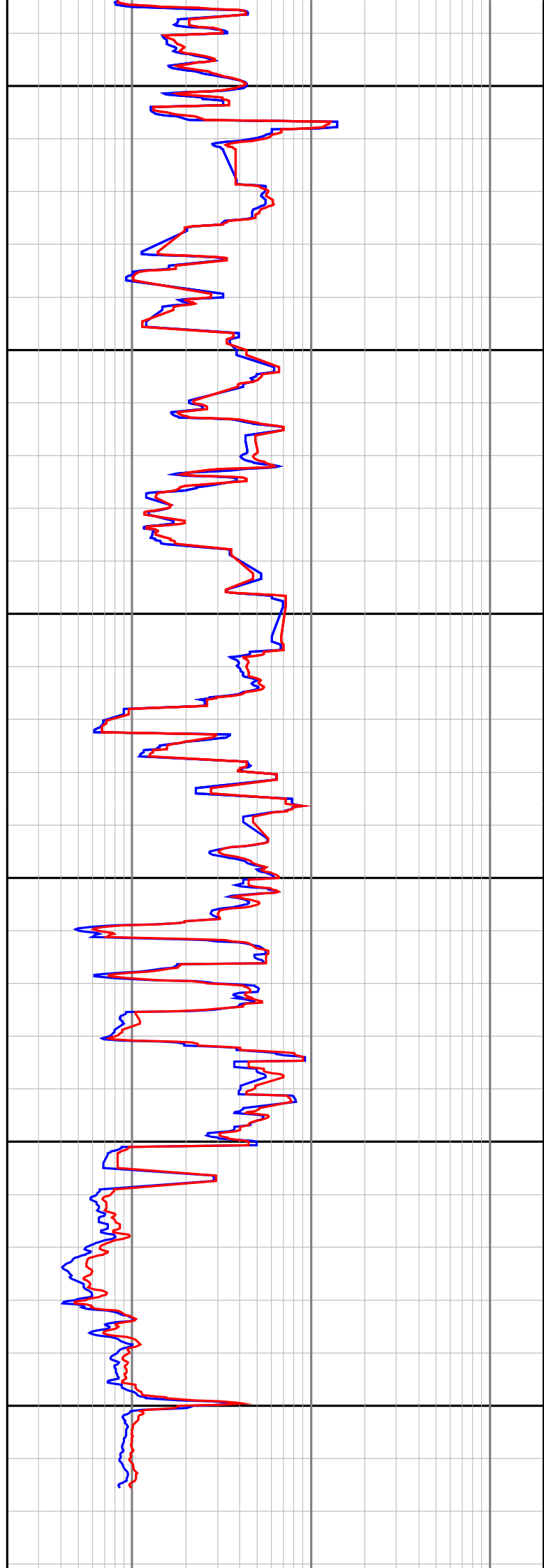
3075

3100





3125
3150
3175
3200
3225
3250



<p align="center">Gamma Ray (SGRC) api</p> <p>0 200</p>	<p align="center">Depth MD 1:500</p>	<p align="center">Ext Shallow Phase Res (SEXP) ohmm</p> <p>0.2 200</p>
<p align="center">Rate Of Penetration (SROP) m/hr</p> <p>500 0</p>		<p align="center">Shallow Phase Res (SESP) ohmm</p> <p>0.2 200</p>
		<p align="center">Medium Phase Res (SEMP) ohmm</p> <p>0.2 200</p>
		<p align="center">Deep Phase Res (SEDP) ohmm</p> <p>0.2 200</p>